

# QUEENS CITY HOSPITAL CENTER CASE STUDY



**STONEPLY**  
real stone real strong real thin



## QUEENS HOSPITAL CENTER

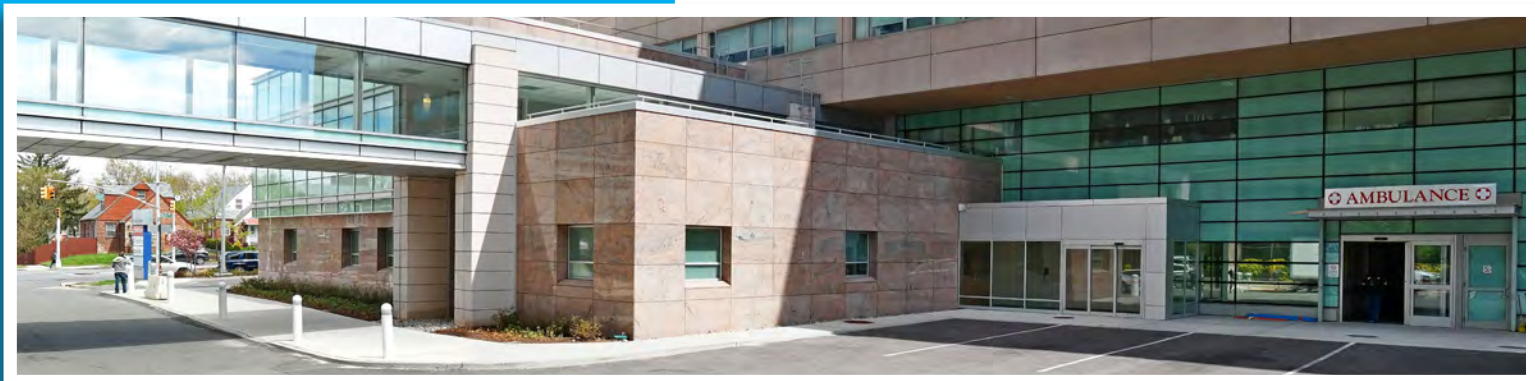
*Granite on aluminum honeycomb cladding for a hospital*

To meet the requirements of New York State's Berger Commission mandate, Queens Hospital Center in Jamaica, NY planned an expansion and renovation program that includes a new psychiatric unit, a new medical/surgical division, a 15,000 square foot expansion of the Comprehensive Psychiatric Emergency Program, and extensive renovations to the emergency department.

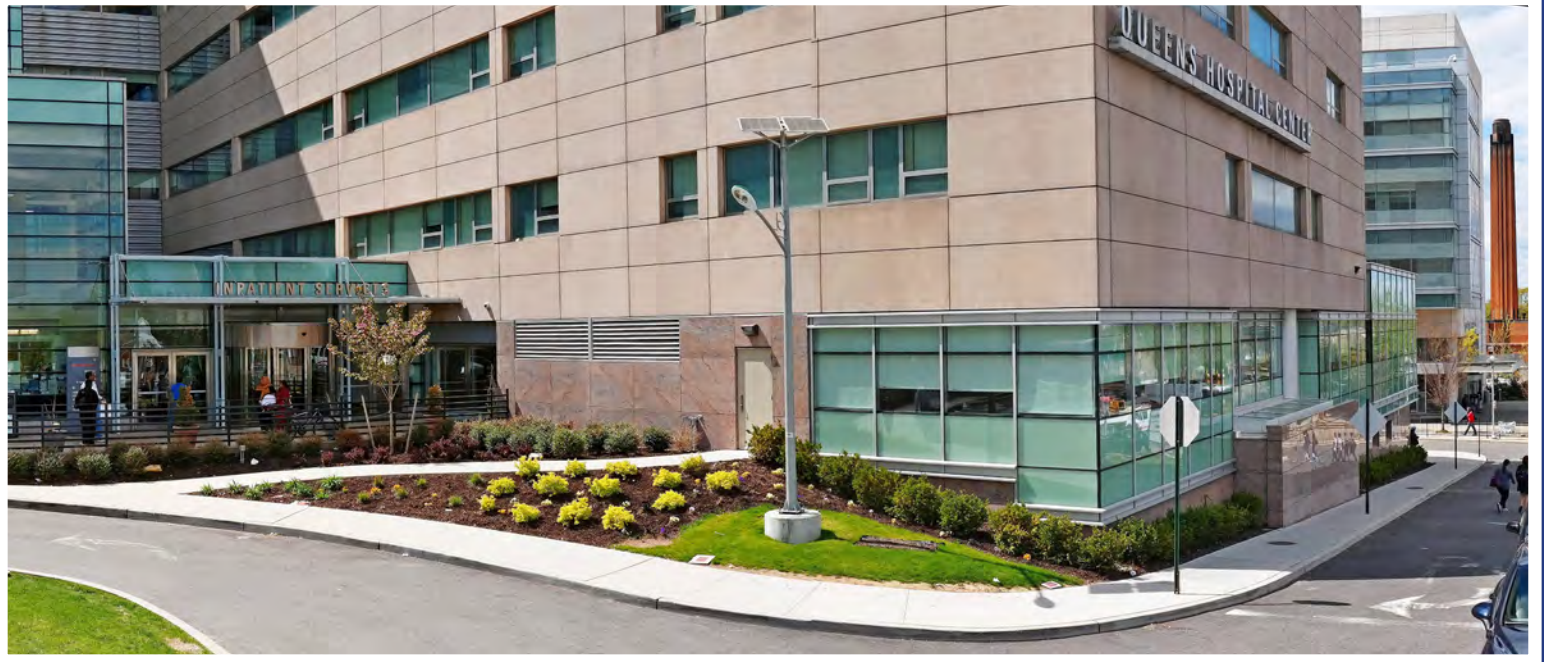
Architect for the hospital expansion, Fletcher Thompson is an award winning firm with an innovative approach to designing health care sites. The Queens Hospital Center expansion provides state-of-the-art facilities that are fresh and cutting-edge, yet practical. Attention to detail, as well as beauty and functionality are reflected in all design concepts for the Queens Hospital Center.

### **CHOOSING STONEPLY**

Included in the exterior design of the Queens Hospital Center is polished Stony Creek granite which spans the first and second floors of the building. StonePly was chosen to supply the granite panels because of our proven track record, with extensive experience providing strong, durable materials for healthcare facilities. Stony Creek granite was selected for its classic appearance, as well as its complimentary colors and potential LEED credit contribution. Plus, the polished granite adds a clean, sophisticated look to the building.







### **STONY CREEK GRANITE AND LEED**

StonePly can access stone from all over the world, so providing the Stony Creek granite was especially easy. Stony Creek granite is quarried in Connecticut, just a couple hundred miles from Queens, so, in an effort to achieve LEED certification, the Stony Creek granite was chosen because of the quarry's distance from the job site.

### **STONEPLY CUSTOM WINDOW SILLS**

Along with the 3,750 sq. ft. of granite cladding provided, StonePly also produced prefabricated window sills from the Stony Creek granite. StonePly worked with the architect to design the sills and ensure that they would work properly and fit perfectly when installed. These window sills were produced as one solid piece, which prevents future joint failure by minimizing silicone joints. This means there is no risk of deterioration from water leakage. The custom designed window sills perfectly match the StonePly panels and create a flawless look.



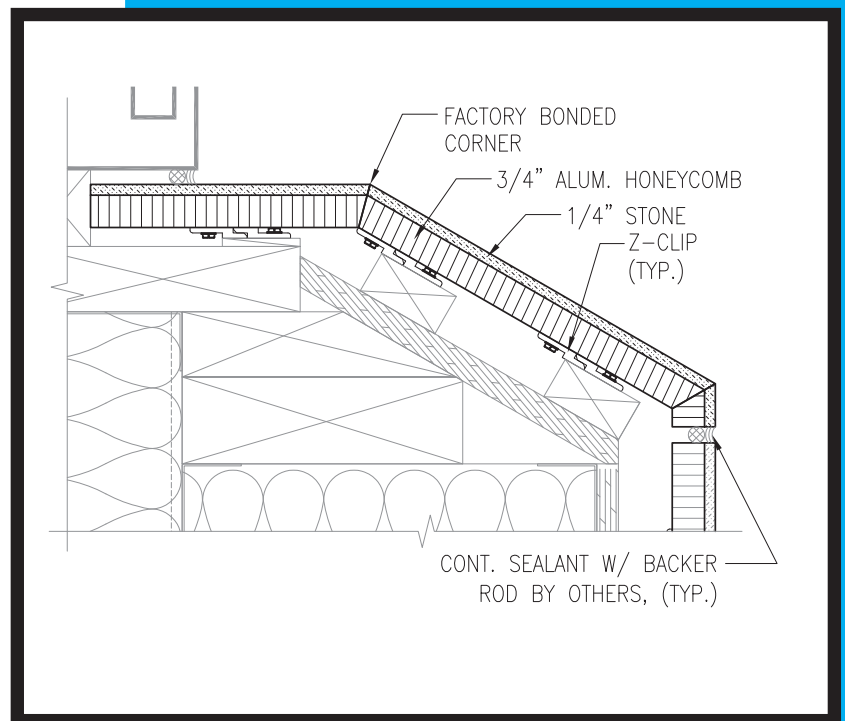


### **EFFICIENT INSTALLATION**

Installation of the StonePly granite panels took place while the hospital was still open and running, which required the construction to be quick, simple and safe. The stone panels were attached with the use of z clips. With the z clips in place, the StonePly panels can endure even the most severe weather conditions.

### **STONEPLY IS HERE TO HELP**

StonePly has extensive experience manufacturing custom natural stone cladding for interior and exterior design. To see additional photos of this project, or for help with specifications, CAD drawings or mounting details, contact StonePly at [www.StonePly.com](http://www.StonePly.com) or by phone at (903) 454-4630. We are here to help.



### **StonePly**

4400 ONeal St. · Greenville, TX 75401  
p 903.454.4630 · f 903.454.3642  
[www.StonePly.com](http://www.StonePly.com) · [info@StonePly.com](mailto:info@StonePly.com)