

# SUBMITTAL AND PRODUCT DATA SHEET

## STONEPLY

*Illuminated Onyx*



Atlantis Resort, Bahamas

### BENEFITS AND ADVANTAGES



Embassy Suites, Florida

*StonePly Illuminated Onyx acrylic and stone with embedded lights. It can be factory fabricated into virtually any size of panel.*

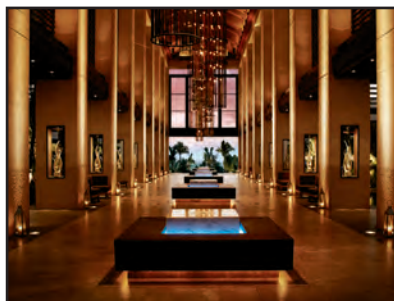
- *Design Freedom. StonePly Illuminated Onyx can be made in almost any size panel you can imagine.*
- *Lightweight. Less than 7 lbs. per square foot when 5/8" thick.*
- *Stable. Made from high strength acrylic, StonePly Illuminated Onyx is dimensionally stable under normal conditions.*
- *Light, stone and backing in one panel.*

### PRODUCT DESCRIPTION

*StonePly Illuminated Onyx panels are designed and tested to offer high strength with a wide range of possibilities in size, detail and finish. Since items are custom made, the StonePly Illuminated Onyx is fabricated in the thickness most appropriate for the application. StonePly Illuminated Onyx weighs just 7 pounds per square foot (based on thickness).*

#### *Typical Uses Include:*

- *Columns and Column Covers*
- *Decorative Ceiling Panels*
- *Feature Walls*
- *Custom Lighting*
- *Bar Tops*
- *Transaction Counters*



Atlantis Resort, Bahamas

*Most projects are custom. Comprehensive shop drawings show shapes and dimensions and indicate layout and fastening methods. Products are made to the size ordered.*

Products are made to the size ordered.

STONEPLY  
MANUFACTURING  
PROCESS

1. From the architect's drawings, StonePly CAD department generates shop drawings showing parts and installation.
2. Once the shop drawings are approved, raw materials are acquired from appropriate sources.
3. Pieces are then laminated together.
4. Quality control checks are completed.
5. Finished panels are packaged for shipment to the jobsite.

TECHNICAL  
PROPERTIES

Light  
Transmission

- The panels are designed to provide uniform illumination across the panels without "hot" spots or shadows. Illumination varies with the veining and variations of the stone.

Thermal  
Expansion

- The panels have a coefficient of thermal expansion of 0.000040in/in-°F (0.000072 m/m-°C).

Description	ASTM Method	Typical Values
Typical Thickness	-	5/8"
Typical Weight	-	6.6Lbs/Sq. Ft.
Specific Gravity of back panel	D 792	1.19
Tensile Strength Elongation, Rupture Modulus of Elasticity of back panel	D 638	10,000 psi (69 M Pa) 4.2% 4000,000 psi (2,800 M Pa)
Flexural Strength (Rupture) Modulus of Elasticity of back panel	D 790	16,500 psi (114 M Pa) 475,000 psi ( 3300 M Pa)
Compressive Strength (Yield) Modulus of Elasticity of back panel	D 695	18,000 psi (124 M Pa) 430,000 psi ( 2960 M Pa)
Impact Strength Izod Milled Notch of back panel	D 256	0.4 ft. lbs/in. of notch (21.6 J/m of notch)
Rockwell Hardness of back panel	D 785	M-94
Barcol Hardness of back panel	D 2583	49

**LIMITATIONS**

*Safety. Follow good safety and industrial hygiene practices during handling and installation. Always follow OSHA and other safety rules. Read material safety data sheets on products before installation.*

**AVAILABILITY AND PRODUCTION CAPACITY**

*StonePly products are available worldwide. Lead times vary depending upon the size and complexity of the project.*

**WARRANTY**

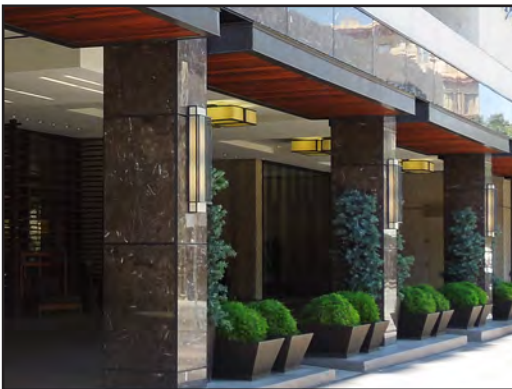
*StonePly's standard warranty is 1 year from receipt of the materials.*

**TECHNICAL SERVICES**

*For technical assistance, including more detailed product information, literature, assistance with detailing, testing and assistance with project specifications, call (903)454-4630 or visit [www.stoneply.com](http://www.stoneply.com).*

**SUBMITTAL APPROVAL**

<b>Job Name</b>	
<b>Contractor</b>	<b>Date</b>



Hyatt Regency, San Antonio



One Monument Square



Plymouth Meeting Mall

