



# PLYMOUTH MEETING MALL

plymouth meeting, pennsylvania

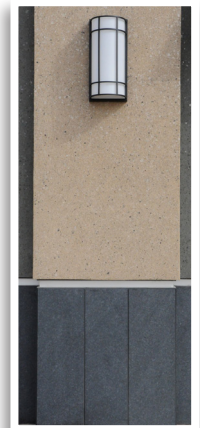
## PROBLEM:

The customer wanted a unique storefront with 24" x 24" Academy Black Granite tiles but needed a fast and painless installation.

## SOLUTION:

StonePly offered a lightweight Academy Black Granite panel consisting of natural stone laminated to an aluminum backing. The panels were installed six times faster than traditional stone setting techniques by utilizing Z-clip extrusions attached to the back of the panels.

StonePly fabricated and furnished 24" x 24" polished Academy Black Granite tiles for the exterior of the Chico's and Olly Kids storefront. At the column covers for Ann Taylor Loft®, StonePly furnished the honed Academy Black Granite panels.



**S T R O M B E R G**

[www.4stromberg.com](http://www.4stromberg.com)

903.454.0904

**Owner:** Pennsylvania Real Estate Investment Trust  
**Architect:** Create Architecture Planning and Design  
**Stone Contractor:** IMC Construction, Inc.